

Stoffe und Kunstleder - Preisgruppe **1**

Stoff - Advantage

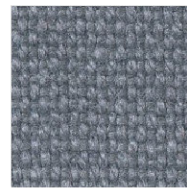
Zusammensetzung
60% Polypropylen, 30% Wolle,
10% Viskose
Gewicht
360g/m² ± 5%
Scheuerfestigkeit
90.000 Martindale
Lichtechtheit
5 (ISO 105-B02:2013)
Reibechtheit
Nass: 4 / Trocken: 4
(ISO 105-X12:2002)



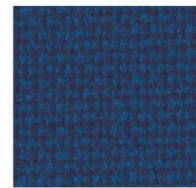
1055 Schwarz



1019 Anthrazit



1009 Granite



1004 Cobalt



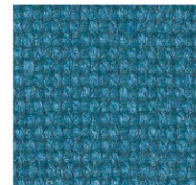
1014 Rot



1020 Wein



1002 Aqua-Grün



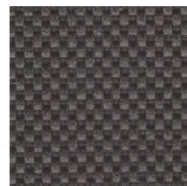
1026 Delta-Blue

Stoff - Nova

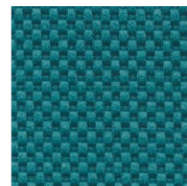
Zusammensetzung
100% Polyester
Gewicht
ca. 560 g/lfdm
Scheuerfestigkeit
50.000 Martindale
Lichtechtheit
5-7 (ISO 105-B02:1996)
Reibechtheit
Nass/Trocken: 4-5
(ISO 105-X12:1995)



1010 Schwarz



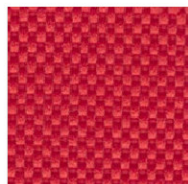
1114 Dunkelgrau



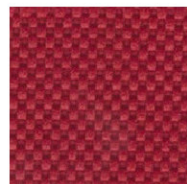
1081 Opalgrün



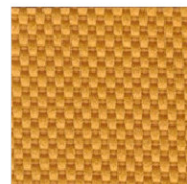
1073 Dunkelblau



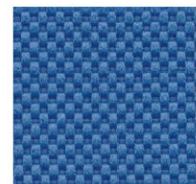
1060 Rot



1066 Weinrot



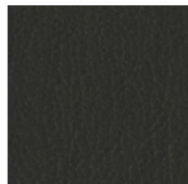
1051 Gelb



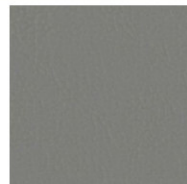
1075 Blau

Kunstleder - Pisa

Zusammensetzung
88% PVC-Beschichtung,
12% Polyester/Viskose-Gewebe
Gewicht
ca. 600 g/m²
Scheuerfestigkeit
100.000 Touren
Biokompatibel
nach DIN EN ISO 10993-5
UV-Beständigkeit
6 (ISO 105-B02)
Dauerknickverhalten
50.000 (DIN 53359)



13349 Schwarz



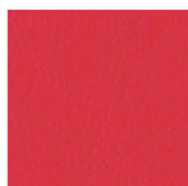
13333 Chrom-Grau



13332 Sand



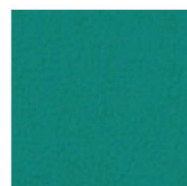
13600 Atollblau



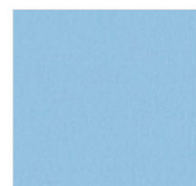
13345 Kirsche



13330 Weiß



13338 Agave



18567 Hellblau

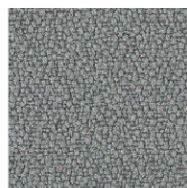
Stoffe und Kunstleder - Preisgruppe **2**

Stoff - Xireme ^{elux}

Zusammensetzung
100% Recycelte Polyester
Gewicht
310g/m² ± 5%
Scheuerfestigkeit
100.000 Martindale
Feuersicherung
B1
Lichtechtheit
6 (ISO 105-B02:1999)
Reibechtheit
Nass: 4 / Trocken: 4
(ISO 105-X12:2002)



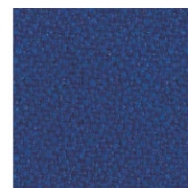
2009 Schwarz



2081 Grau



2091 Nougat



2100 Ocean



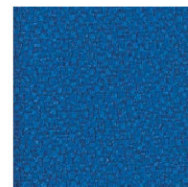
2106 Calypso



2096 Apple



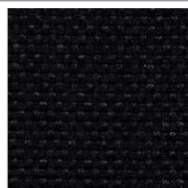
2071 Sandsturm



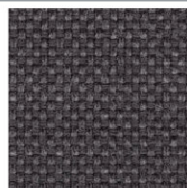
2035 Honeymoon

Stoff - Château ^{elux}

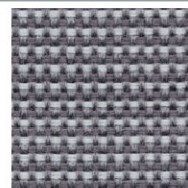
Zusammensetzung
100% Perfortex[®] Plus
Gewicht
250g/m² ± 5%
Scheuerfestigkeit
Stufe A (schwere Objektqualität)
Feuersicherung
B1
Lichtechtheit
6 (ISO 105-B02:1999)
Reibechtheit
Nass: 4 / Trocken: 4
(ISO 105-X12:2002)



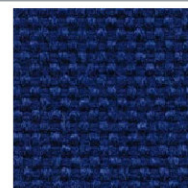
2048 Beauvois-Schwarz



2043 Belclaire-Grau



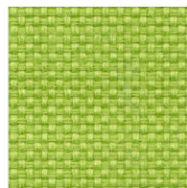
2038 Grau/Lichtblau



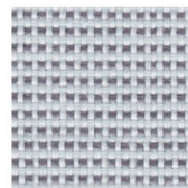
2051 Bellay-Blau



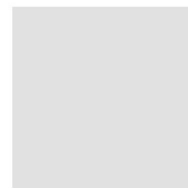
2047 Divonne-Rot



2028 Chantilly-Grün

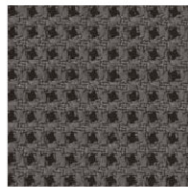


2036 Lichtblau/Grau

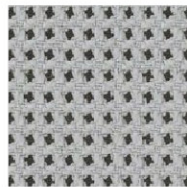


Stoff - Fizz

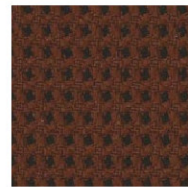
Zusammensetzung
100% Polyester
Breite
140cm nutzbare Breite
Gewicht
350g/m² ± 5%
Scheuerfestigkeit
80.000 Martindale
Lichtechtheit
5 (ISO 105-B02:2013)
Reibechtheit
Nass: 4 / Trocken: 4
(ISO 105-X12:2002)



2F66 Lava-Grau



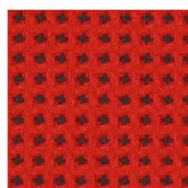
2F63 Dove-Grau



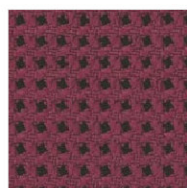
2F67 Chestnut-Braun



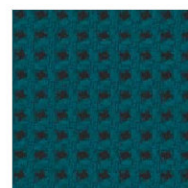
2F68 Baltic-Blau



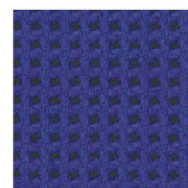
2F54 Scarlet-Rot



2F60 Burgon-Rot



2F62 Drake-Grün



2F65 Verona-Blau

Stoffe und Kunstleder - Preisgruppe **3**

Stoff - Urban ^{nbs}

Zusammensetzung
100% Recycelte Polyester
Gewicht
320g/m² ± 5%
Scheuerfestigkeit
100.000 Martindale
Feuersicherung
B1
Lichtechtheit
6 (ISO 105-B02:1999)
Reibechtheit
Nass: 4 / Trocken: 4
(ISO 105-X12:2002)



3009 Schwarz



3207 Steingrau



3091 Bench-Braun



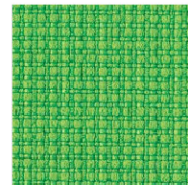
3027 Living-Sand



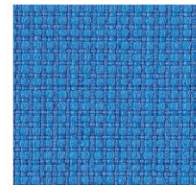
3076 Highrise-Rot



3127 Precinct-Rot



3200 Uptown-Grün



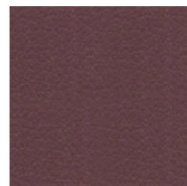
3208 Ringroad-Blau

Kunstleder - Peri

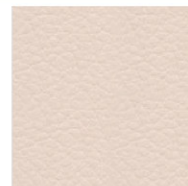
Zusammensetzung
89% PVC-Beschichtung,
11% Polyester/Viskose-Gewebe
Gewicht
ca. 650 g/m²
Scheuerfestigkeit
100.000 Touren
Biokompatibel nach
DIN EN ISO 10993-5/-10
UV-Beständigkeit
6 (ISO 105-B02)
Dauerknickverhalten
50.000 (DIN 53359)



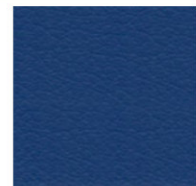
3P10 Schwarz



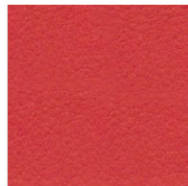
3P09 Kastanie



3P02 Creme



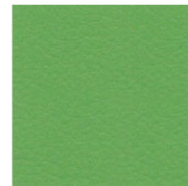
3P06 Saphir



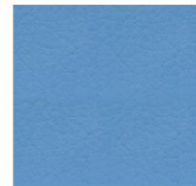
3P05 Rot



3P04 Safran



3P08 Kiwi



3P07 Azur

Kunstleder - Stamskin

Zusammensetzung
Mehrschichtverbund
mit Tragen aus Polyamid-Jersey
Gewicht
780 g/m²
Scheuerfestigkeit
120.000 Touren
Feuersicherung
B1
Dauerknickverhalten
400.000 (EN ISO 7854)



3445 Dunkelgrau



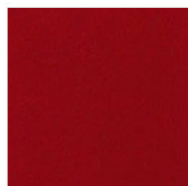
3434 Hellgrau



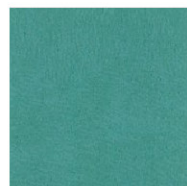
3012 Weiß



3125 Mint



3479 Rubinrot



3458 Türkis

ESD Kunstleder und Stoffe - Preisgruppe **3**

ESD Kunstleder - Mano

Zusammensetzung

89% PVC-Compound,
11% BW/PES-gestrickt

Gewicht

600g/lfdm



3486 Schwarz

ESD Stoff - Hi-Tech Anti-Static

Zusammensetzung

29% Wolle, 70% Polypropylene,
1% BASF Resistat¹

Gewicht

360g/m² ± 5%

Scheuerfestigkeit

50.000 Martindale

Lichtechtheit

5 (ISO 105-B02:1999)

Reibechtheit

Nass: 4 / Trocken: 4
(ISO 105-X12:2002)



3064 Schwarz



3078 Anthrazit



3081 Weinrot



3061 Dunkelblau

Leder und Kunstleder - Preisgruppe **4**

Leder - Asia

Zusammensetzung

gederktes Rindsleder,
geprägt auf europäischen Häuten

Finish

auf Wasserbasis veredelt

Dauerbiegefestigkeit

50.000 (ISO 5402)

Lichtechtheit

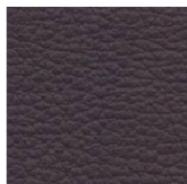
5 (ISO 105B02)

Reibechtheit

Nass: 4 / Trocken: 4

Weiterreißfähigkeit

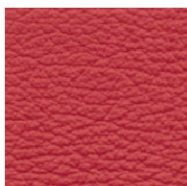
Einriss 20 NM (ISO 5377-1)



4423 Nero-Schwarz



4422 Acqua-Grau



4417 Rot



4426 Blu

Kunstleder - Ruby

Zusammensetzung

42% PU, 20% PES, 38% Prolex

Gewicht

510 g/m²

Scheuerfestigkeit

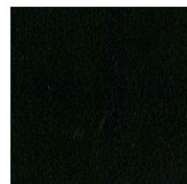
500.000 Touren

Atmungsaktiv

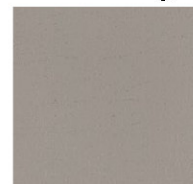
nach DIN 53122-1

Reibechtheit

trocken: 5 / Nass: 5
(EN ISO 105X12)



4_9002 Schwarz



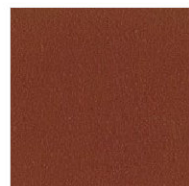
4_0015 Cement-Grau



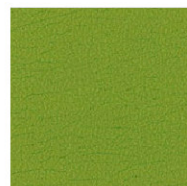
4_6007 Bottle-Grün



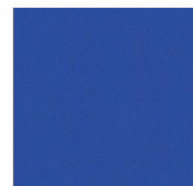
4_5006 Ocean-Blau



4_8017 Sienna-Braun



4_6021 Spring-Grün



4_5014 Persian-Blau